



manTRI

Mantri Developers

Bangalore | Chennai | Hyderabad | Pune

About Us



- Mantri Developers Pvt. Ltd. , one of India's leading Real Estate Company was founded by Mr. Sushil Mantri in the year 1999
- The company is focused on the development of residential sector, retail, hospitality, IT Parks and educational institutions in Bangalore, Chennai, Hyderabad and Pune



mantri

Our Values

Punctuality



Quality



Reliability



Speed



Transparency



Values

THAT REPRESENT OUR WORTH.

ZRICKS PROT

A stylized letter 'Z' logo composed of three overlapping geometric shapes: a dark grey triangle on the left, a dark red parallelogram in the center, and a dark grey triangle on the right.

Our Icons

ZRICKS PHOT

Mantri Altius

- First Project completely sold by Invitation only
- Winner of the CNBC Crisil award for India's best residential property in 2007



ZRICKS

Mantri DSK Pinnacle



- South India's Tallest Residential Tower
- 46 storey accommodating 133 luxury homes
- First project with Aqua Gym in India
- Sky Observatory on the 42nd floor
- First residential project to have a sky observatory
- Smart homes for Smart people™ – Powered by Cisco

Mantri Espana



- 339 Super Luxury Homes; Rich with Mediterranean landscape and glamorous amenities
- Smart homes for Smart people™— Powered by Cisco

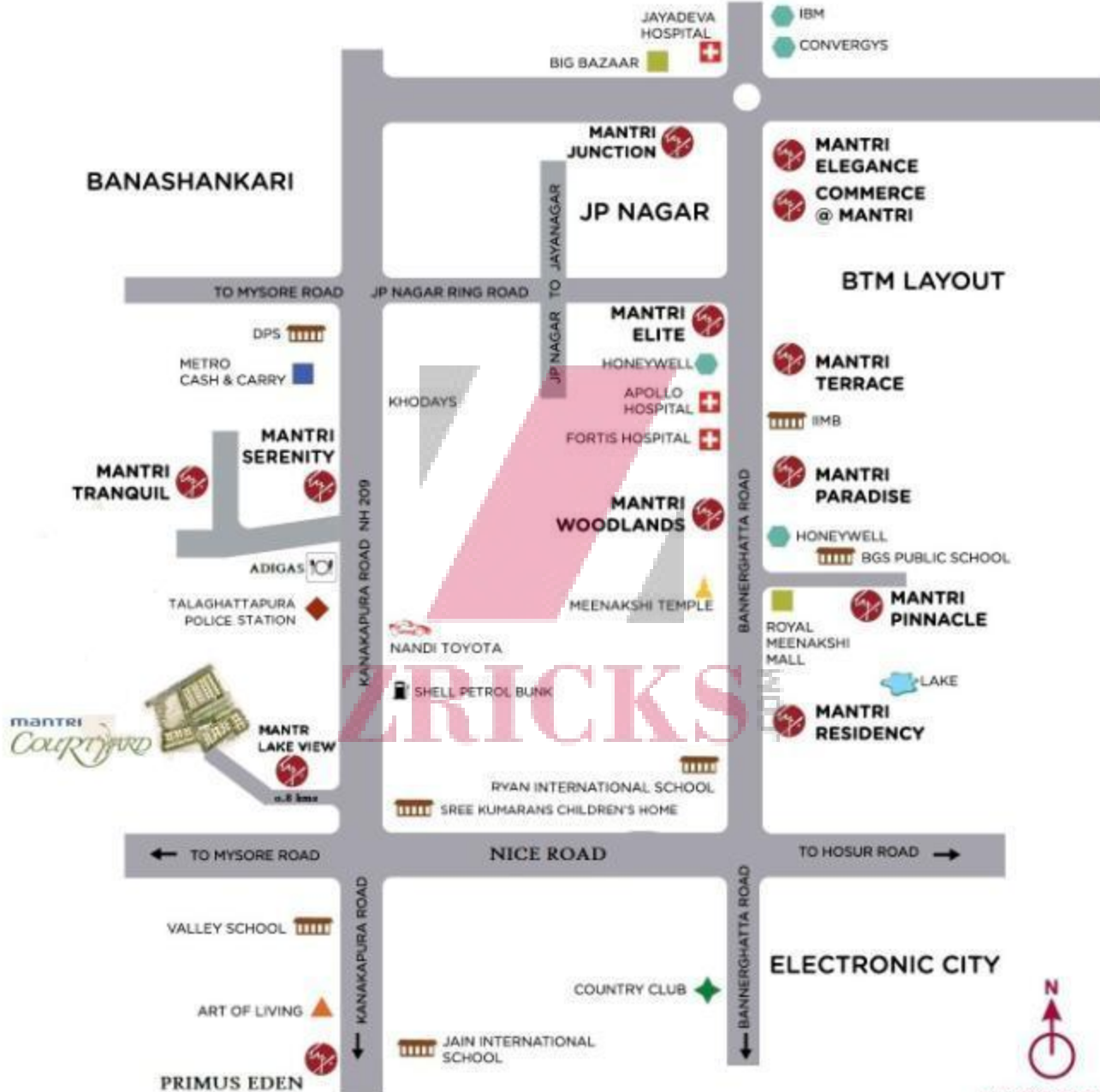
Introducing

mantri

COURTYARD

TRICKS

The Address



Location USPs

Easy Accessibility:

- Strategically located just 0.8 km from the Kanakpura road .
- Located just 3kms from upcoming mall by Mantri and Krishna Leela park
- 1 km away from Nice road junction .

ZRICKS^{PROT}



High Points

- ❖ Individual private Courtyard with each home.
- ❖ Large well equipped clubhouse.
- ❖ Well designed architecture

Others -

- ❖ 3 & 4 BHK homes
- ❖ Area starting from to 1690sq.ft to 3495sq.ft
(157 sq.mt to 324.69sq.mt)
- ❖ 2 parking slots with each home.

ZRICKS



mantri

Landscape Plan



LEGENDS

- 1. MAIN ENTRY TO LAYOUT
- 2. MAIN SPINE
- 3. VILLA ENTRY
- 4. CAR PARKING
- 5. COURTYARDS
- 6. PLANTING WITH SEATER
- 7. PRIVATE GARDEN TYPE-1
- 8. PRIVATE GARDEN TYPE-2
- 9. CLUB HOUSE
- 10. TENNIS COURT
- 11. SWIMMING POOL AREA
- 12. KIDS PLAY AREA
- 13. PARTY LAWN
- 14. BASKET BALL COURT

A stylized logo consisting of a large, dark red 'Z' shape with a black outline, set against a black background. The 'Z' is composed of three parallel diagonal lines.

Elevation Views

ZRICKS PROT



mantri



www.Zricks.com



mantri



www.Zricks.com





mantri



www.Zricks.com



mantri



www.Zricks.com

A stylized logo consisting of a large, slanted 'Z' shape. The top bar of the 'Z' is dark grey, the middle bar is a dark red, and the bottom bar is dark grey. Two thin, horizontal yellow lines are positioned above and below the text.

Interior Views

ZRICKS PHOTOGRAPHY



mantri



ZRICKS

www.Zricks.com



mantri



www.Zricks.com



mantri



www.Zricks.com



mantri



www.Zricks.com

A stylized letter 'Z' logo composed of three overlapping diagonal bars. The top bar is dark grey, the middle bar is a dark red, and the bottom bar is dark grey.

Clubhouse

ZRICKS^{PROT}



mantri



www.Zricks.com



mantri



ZRICKS

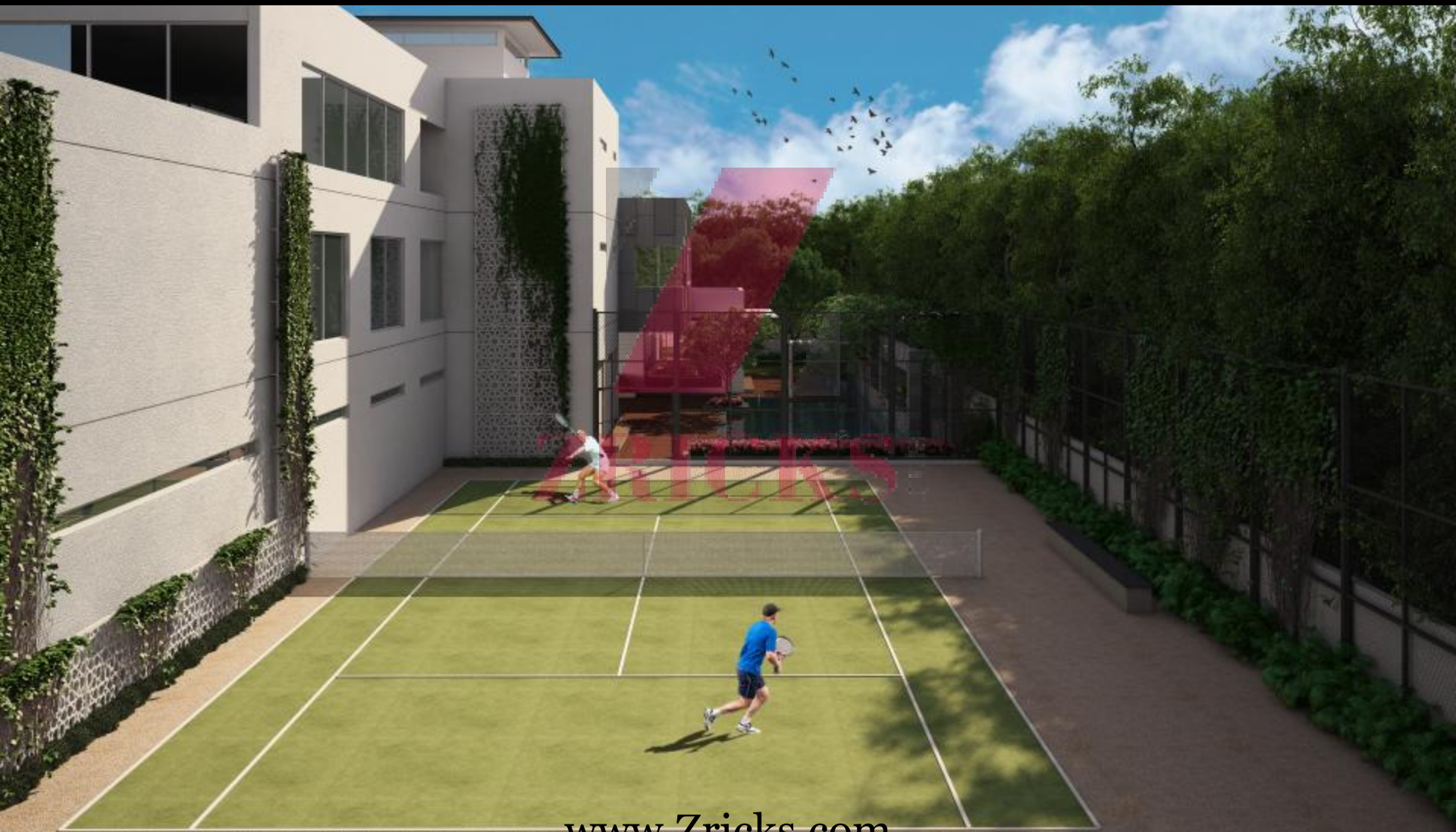
CLUB HOUSE

www.Zricks.com





mantri



www.Zricks.com

Multifunction Hall



www.Zricks.com

Gymnasium



www.Zricks.com

Squash Court



www.Zricks.com



mantri

Billiards Room



www.Zricks.com

Aerobics



www.Zricks.com



mantri

Mini Theatre



www.Zricks.com

A stylized letter 'Z' logo composed of three parallel diagonal stripes. The top stripe is dark grey, the middle stripe is a dark red, and the bottom stripe is dark grey.

Floor plans

ZRICKS PHOT

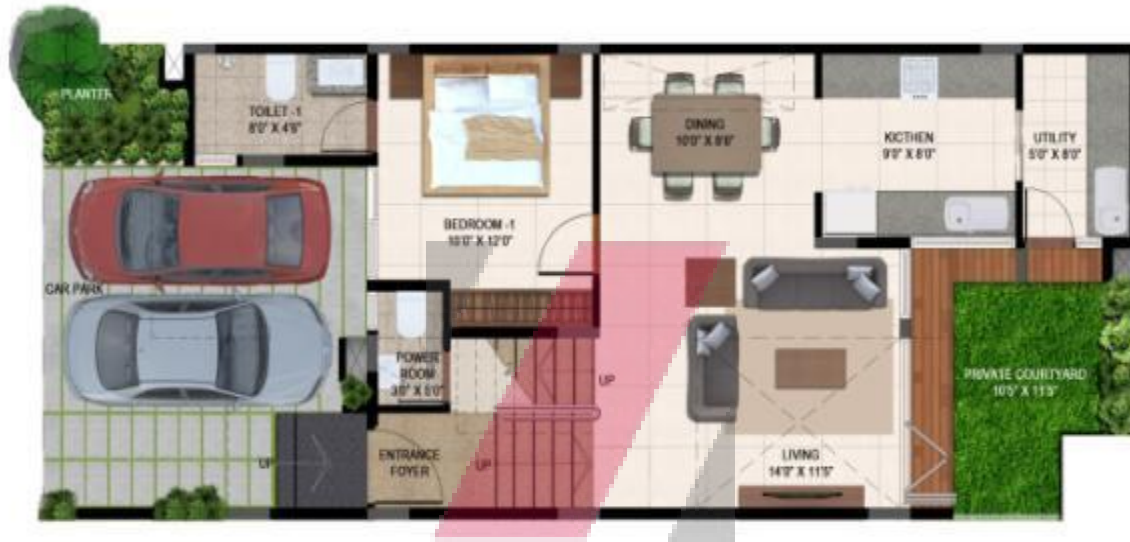
A stylized letter 'Z' logo composed of three parallel diagonal stripes. The top stripe is dark grey, the middle stripe is a dark red, and the bottom stripe is dark grey.

Type 1 up

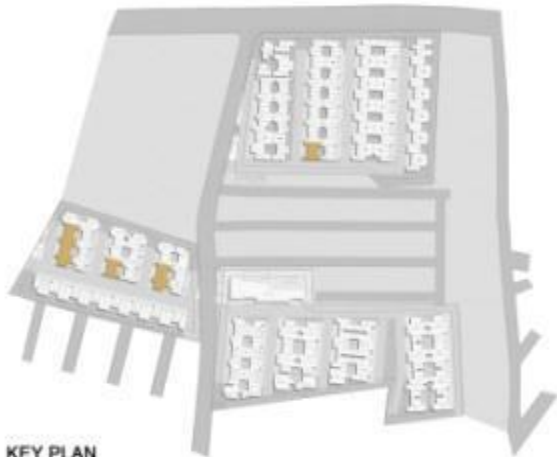
ZRICKS[®] PLOT



mantri



ZRICKS.COM



KEY PLAN

 GROUND FLOOR PLAN	TYPE : 1 UP	PROJECT : 
	AREA : 1690 SFT	

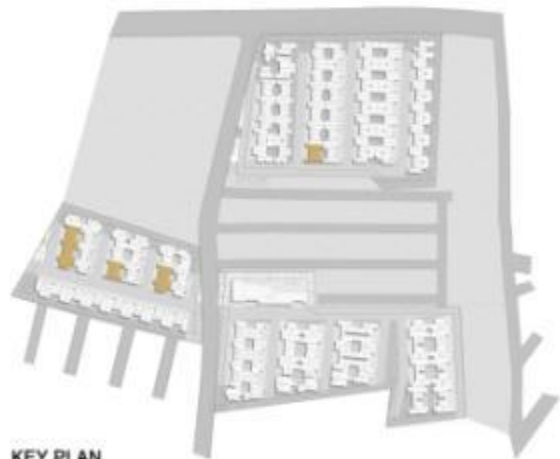
www.Zricks.com



mantri



ZRICKS.COM



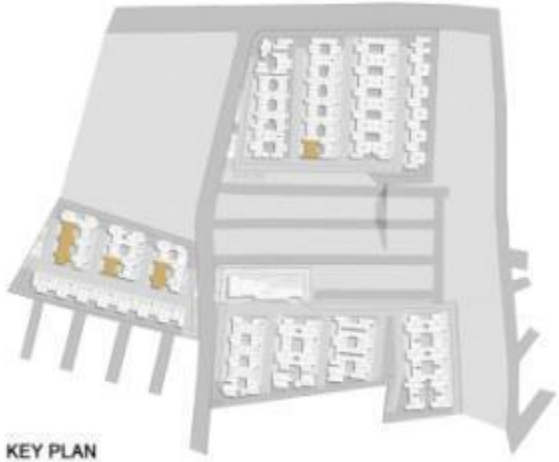
KEY PLAN

 FIRST FLOOR PLAN	TYPE: 1 UP	PROJECT: 
	AREA: 1690 SFT	



www.Zricks.com



ZRICKS.COM



KEY PLAN

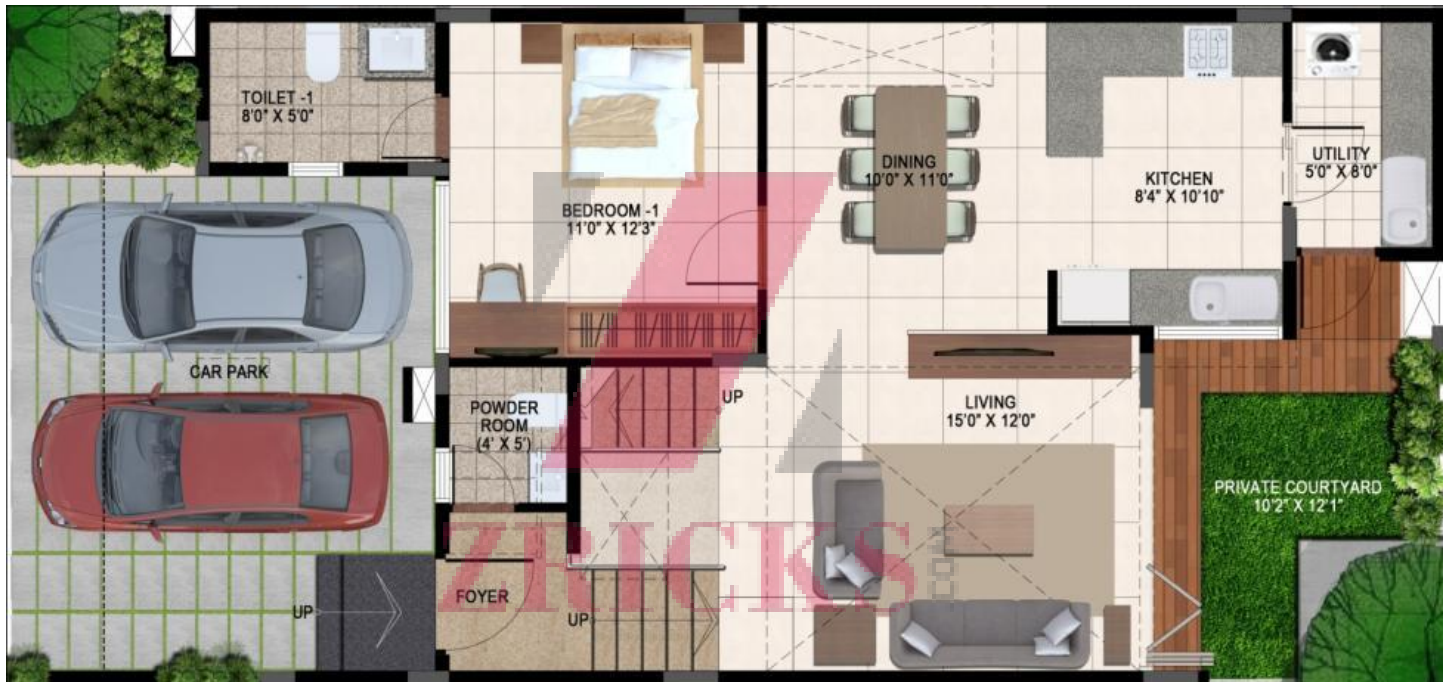
 TERRACE FLOOR PLAN	TYPE : 1 UP	PROJECT : 
	AREA : 1690 SFT	

www.Zricks.com



Type 2 UP

ZRICKS^{MOT}



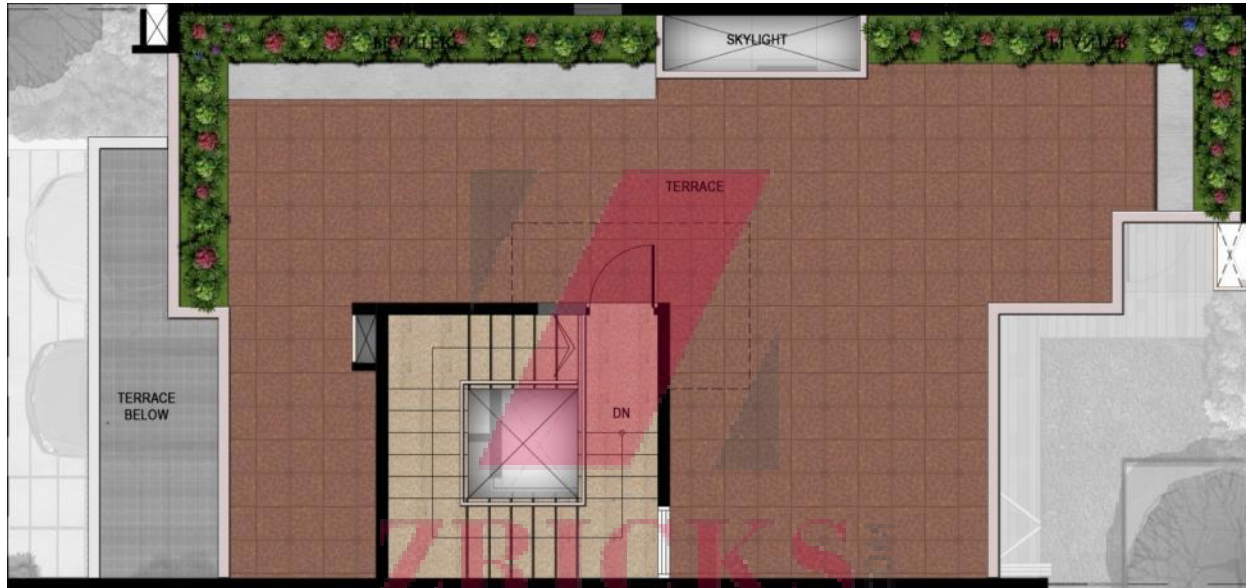
GROUND FLOOR	
TYPE	2 UP
SUBA	1930 SQ.FT

mantri
COURTYARD



FIRST FLOOR	
TYPE	2 UP
SUBA	1930 SQ.FT

mantri
COURTYARD



TERRACE	
TYPE	2 UP
SUBA	1930 SQ.FT

mantri
COURTYARD

A stylized logo consisting of a large, slanted 'Z' shape. The left vertical bar of the 'Z' is dark grey, the top horizontal bar is dark red, and the right vertical bar is dark grey. The text 'Type 4 up' is centered over the 'Z' in white.

Type 4 up

ZRICKS[®] MDT

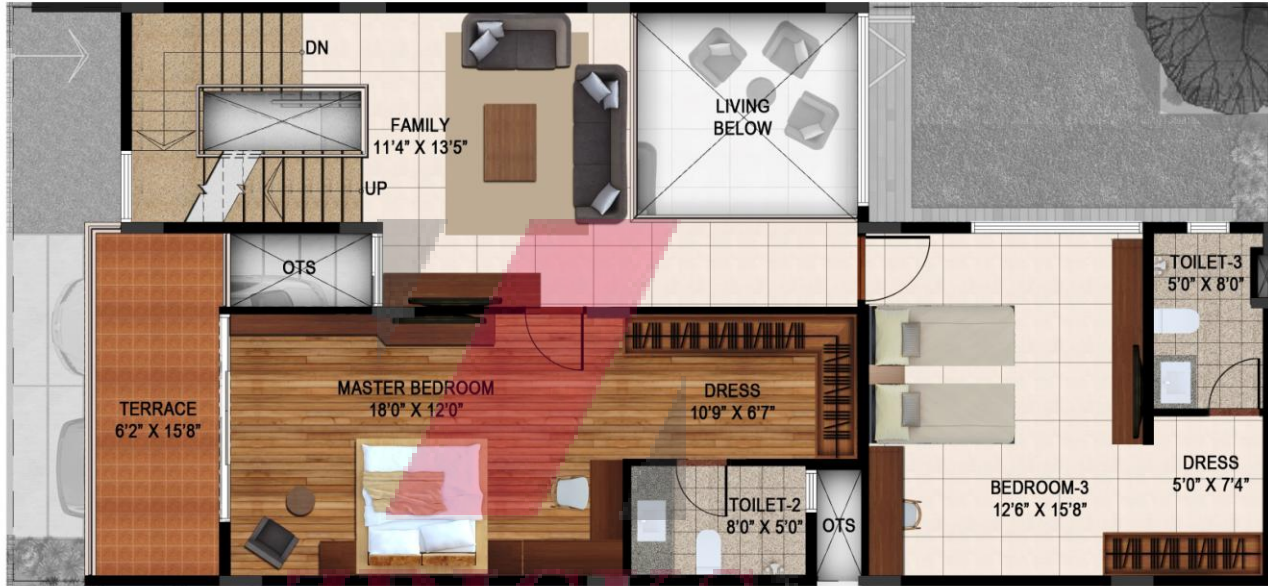


KEY PLAN

GROUND FLOOR	
TYPE	4 UP
SUBA	2480 SQ.FT



mantri



ZRICKS.COM

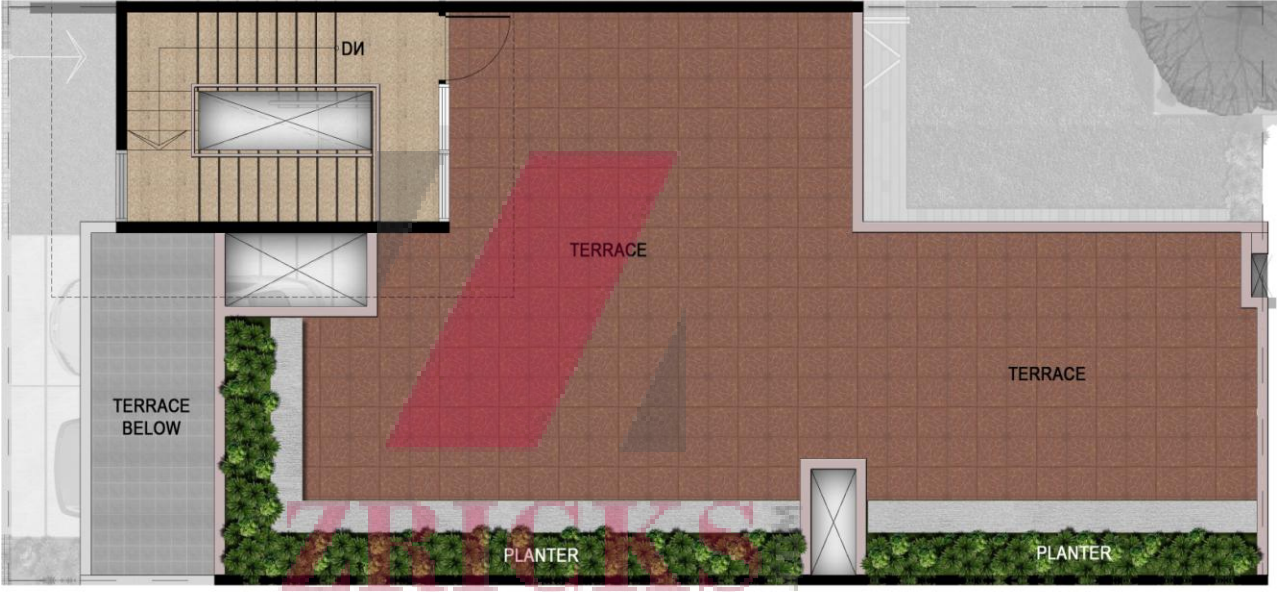


KEY PLAN

FIRST FLOOR	
TYPE	4 UP
SUBA	2480 SQ.FT

mantri
COURTYARD

www.Zricks.com



KEY PLAN

TERRACE	
TYPE	4 UP
SUBA	2480 SQ.FT

mantri
COURTYARD

A stylized letter 'Z' logo composed of three diagonal stripes. The top-left stripe is dark grey, the middle stripe is a deep red, and the bottom-right stripe is dark grey.

Type 6

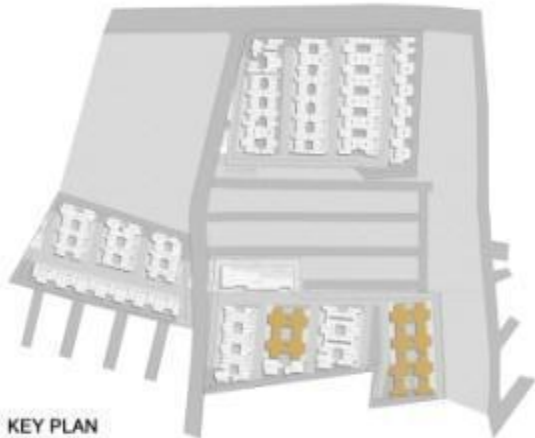
ZRICKS[®] PLOT



mantri



ZRICKS



	TYPE :	PROJECT :
	6	mantri <i>COURTYARD</i>
GROUND FLOOR PLAN	AREA :	
	3495 SFT	

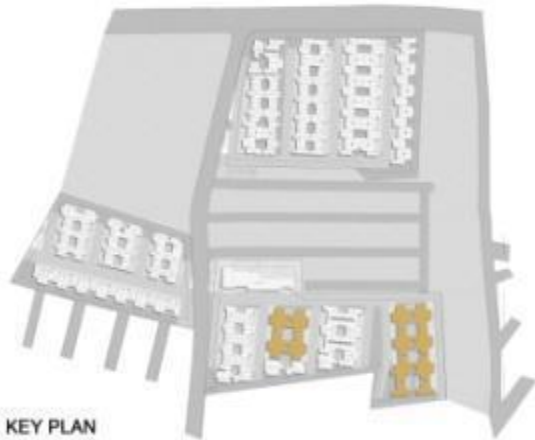
www.Zricks.com



mantri



ZRICKS



	TYPE :	PROJECT :
	6	mantri <i>COURTYARD</i>
FIRST FLOOR PLAN	AREA :	
	3495 SFT	

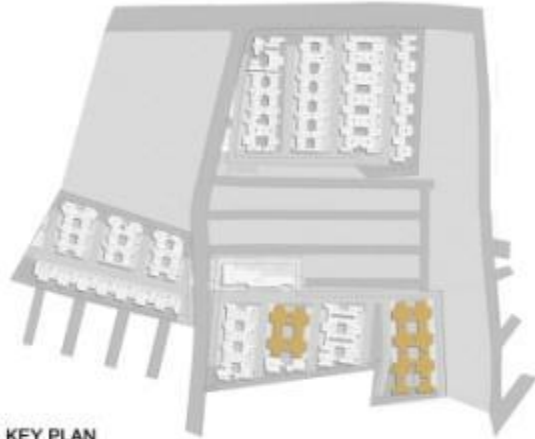
www.Zricks.com



mantri



ZRICKS



KEY PLAN

	TYPE :	PROJECT :
	6	mantri <i>COURTYARD</i>
TERRACE FLOOR PLAN	AREA :	
	3495 SFT	

www.Zricks.com

Differentiators



MANTRI PROMISES

- On time, every time
- Highest carpet area
- Award-winning landscapes
- Attention to detail
- Community living

PROPCARE

- Project maintenance
- Rentals & resales

mantri insignia

- An exclusive loyalty program
- Points on every successful purchase/referral
- Redemption of points from a wide range of exclusive benefits and privileges

SPACETHETICS

adding elan to your space

- One-stop shop for home interiors
- Premium, top of the line accessories



mantri

Awards and Accolades

Awards and Accolades.



Mantri Developers was honored by CMO Asia with the award for Brand Excellence.



Mantri Developers was adjudged as one of India's Top 10 builders at the "Construction World Architect & Builders awards."



Mantri Developers was awarded the CNBC Awaaz CRISIL Real Estate Award for India's best Residential Building.

ZRICKS



Mr. Sushil Mantri was bestowed with the "Young Visionary Award in Real Estate Infrastructure" by CSI.



Mr. Sushil Mantri was awarded 'Entrepreneur of the Year' by Big Brands Research.



Mantri Developers was conferred with the prestigious CII Sustainability award for "STRONG COMMITMENT TO EXCEL" on the journey towards sustainable development.

www.Zricks.com

World Class Management Systems



We at Mantri Developers are committed to providing eco-friendly commercial and residential dwellings in a safe and healthy environment. We abide by our commitment to prevent pollution and meet, legal and other requirements. And continually improve the effectiveness of our management system.

We will ceaselessly work towards minimizing occupational risks and hazards at our work stations. And we respect the principle of social accountability and meet its requirements.



Contact Information

Head Office: Mantri House
#41, Vittal Mallya Road, Bangalore – 560 001
Ph: +91-80-4130 0000, email: homes@mantri.in

Project Office: Mantri Courtyard ,
Off Kanakpura Road, Bangalore ,

e-mail: courtyard@mantri.in
SMS: mantri to 56767

Dubai e-mail: dubaisales@mantri.in
M: +97150-549-3824
T: +97104-358-4305

www.mantri.in

Toll free : 1800-121-0000



Thank You

ZRICKS PHOT